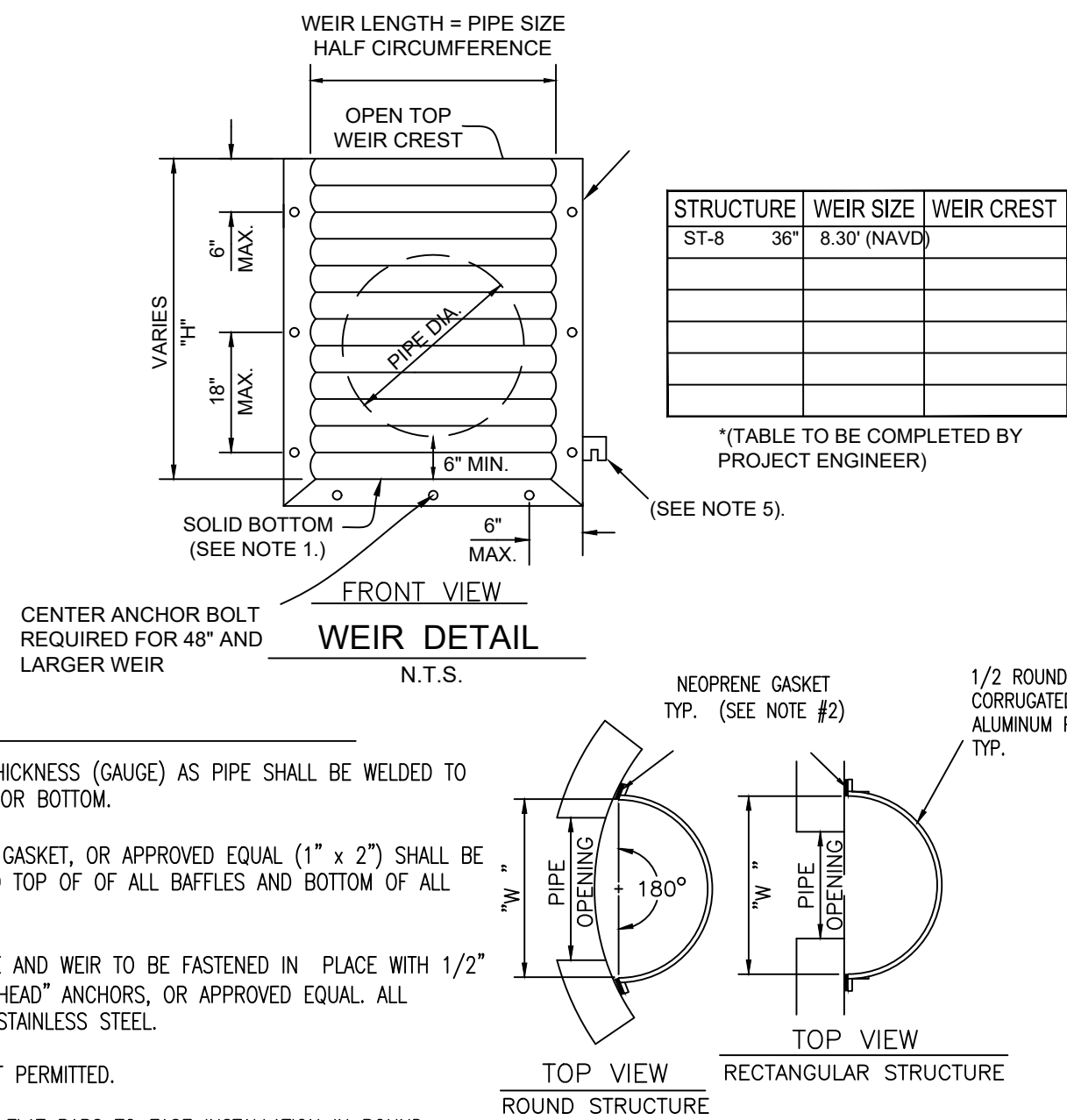
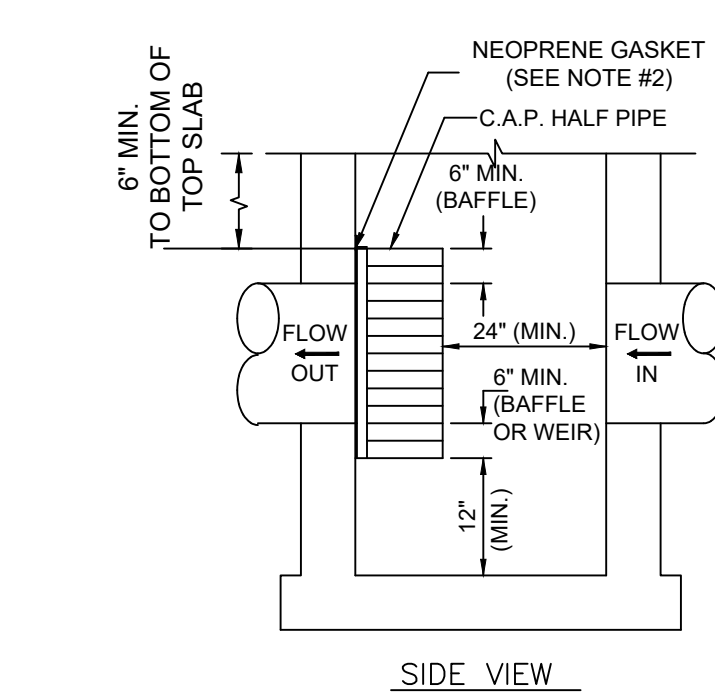


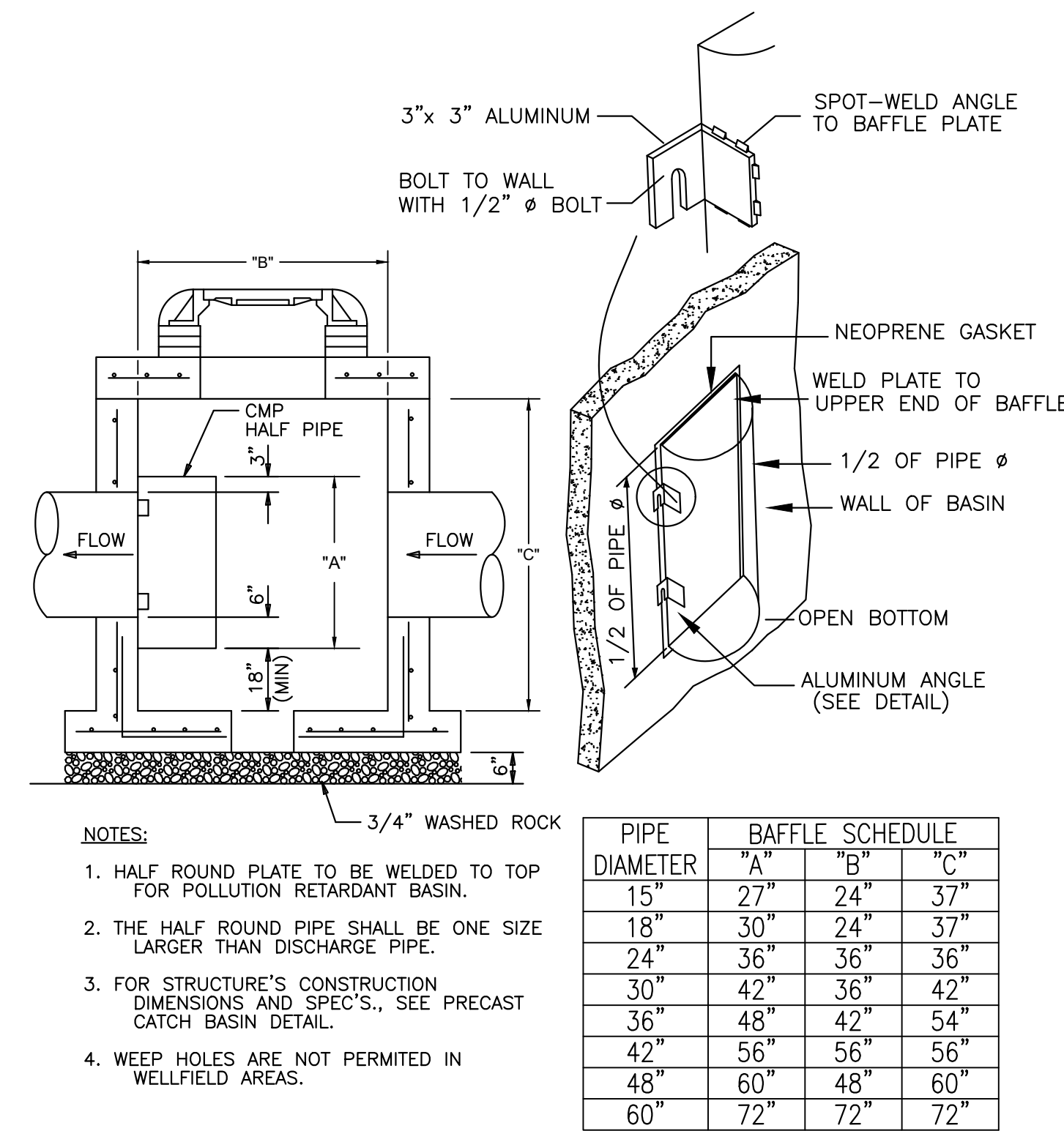
TYPICAL EXFILTRATION TRENCH DETAIL
NOT TO SCALE

K-H



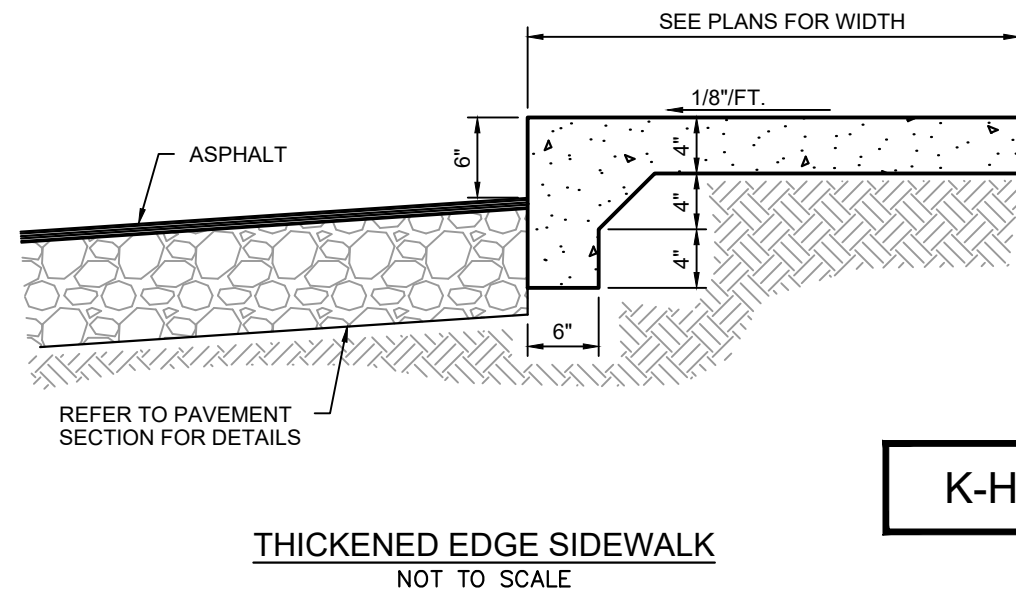
WEIR DETAIL
NOT TO SCALE

K-H



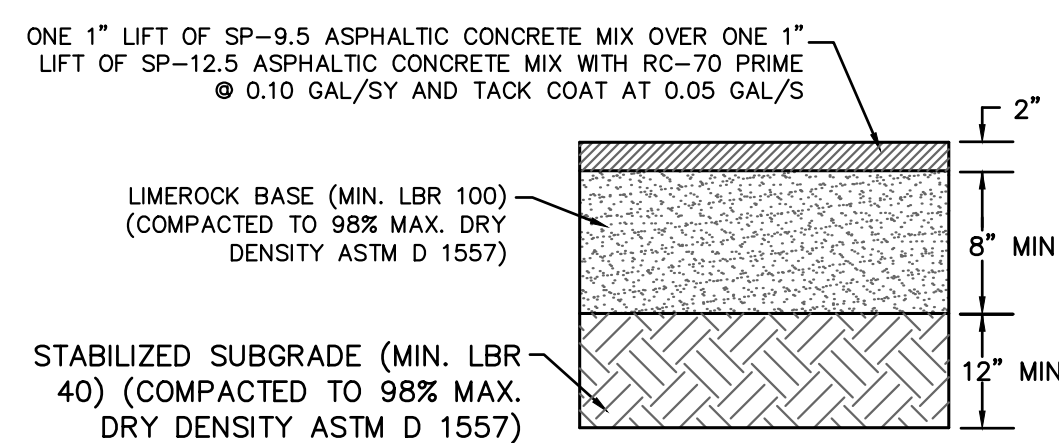
POLLUTION RETARDANT BAFFLE (PRB)
NOT TO SCALE

K-H



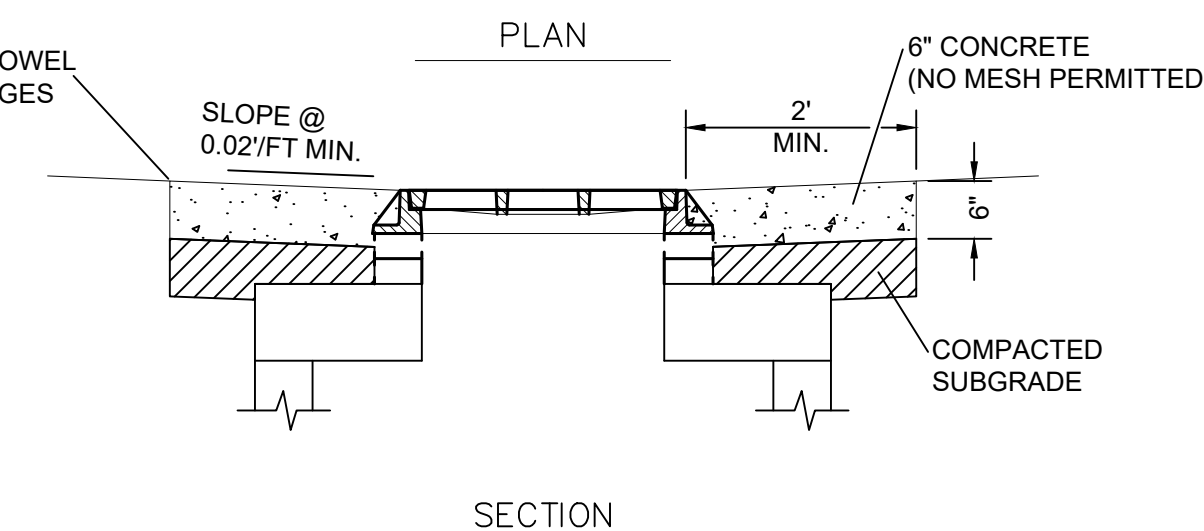
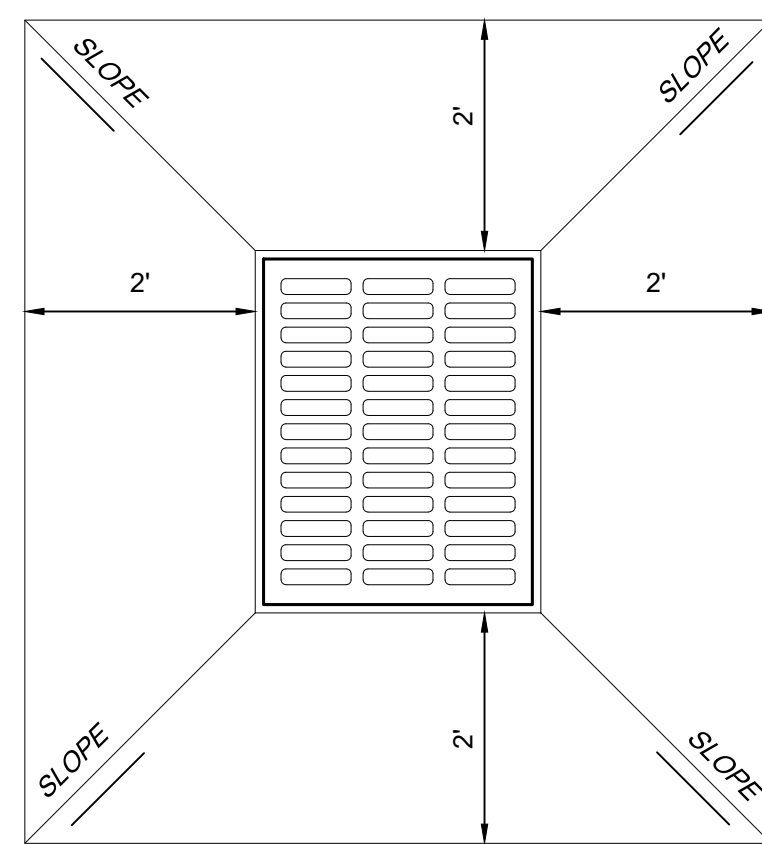
THICKENED EDGE SIDEWALK
NOT TO SCALE

K-H



HEAVY DUTY ASPHALTIC CONCRETE
PAVEMENT SECTION
NOT TO SCALE

K-H



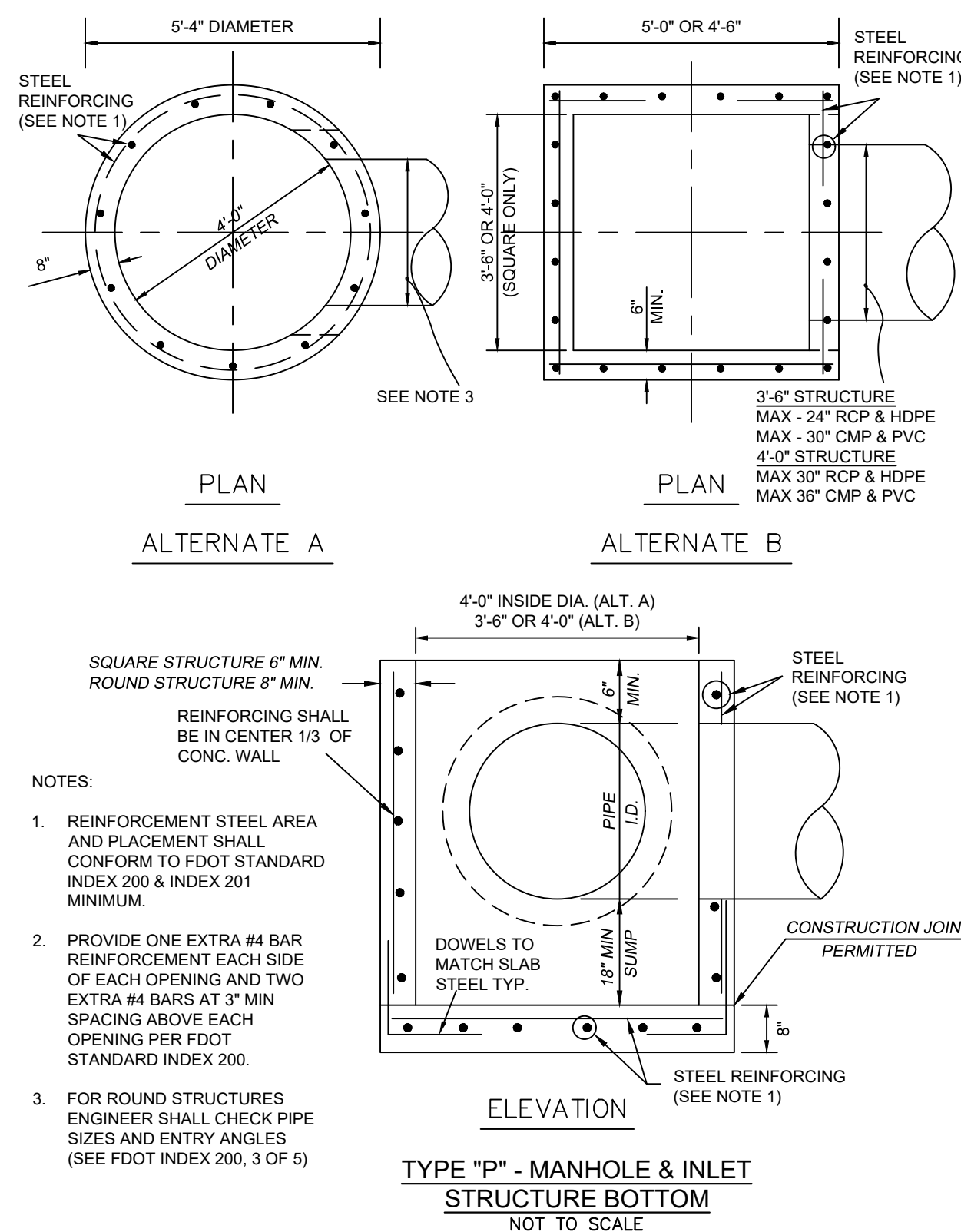
SECTION

NOTES:

1. CONSTRUCT 2' WIDE (MIN.) APRON AROUND INLET (4 SIDES).
2. APRON AROUND CATCH BASIN SHALL BE 6" THICK CONCRETE ON COMPACTED SUBGRADE.
3. CONCRETE SHALL BE 3000 P.S.I. MIN. @ 28 DAYS.
4. SLOPE OF APRON SHALL MATCH EXISTING PAVEMENT SLOPE.
5. PROVIDE LIGHT BROOM FINISH ON CONCRETE SURFACE AND TOOL ALL EXPOSED EDGES.

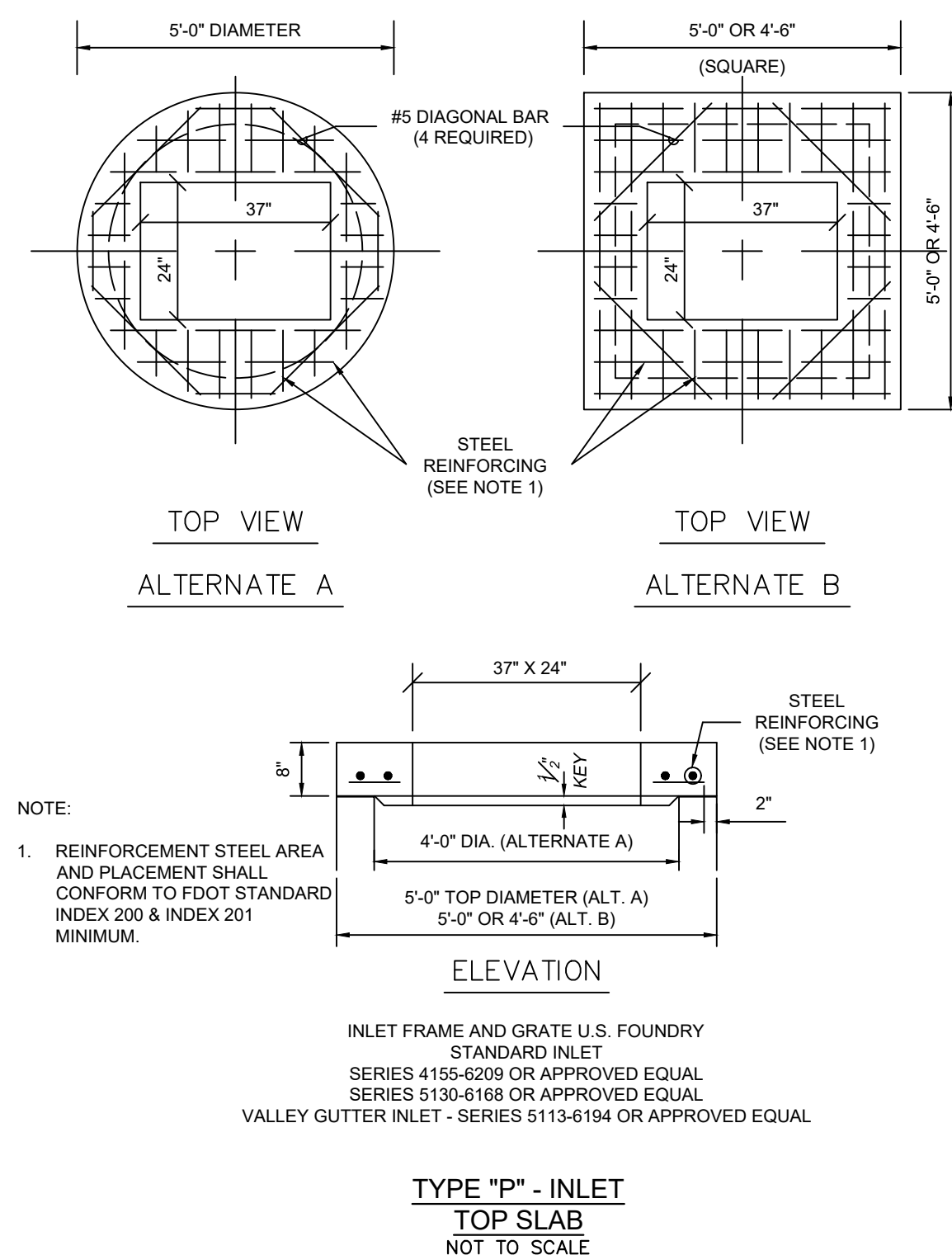
CATCH BASIN APRON DETAIL
NOT TO SCALE

K-H



TYPE "P" - MANHOLE & INLET
STRUCTURE BOTTOM
NOT TO SCALE

K-H



TYPE "P" - INLET
TOP SLAB
NOT TO SCALE

KL

KIMLEY-HORN AND
ASSOCIATES, P.E.